



THOMPSON MEAT MACHINERY

Thompson Mk3 Bandsaw

PRECISION MACHINED PARTS ARE
USED IN MANUFACTURE OF TOP
AND BOTTOM GUIDE ASSEMBLIES

HIGH QUALITY DOOR CATCHES
THAT DO NOT ALLOW THE DOOR
TO ACCIDENTALLY SPRING OPEN

REMOVABLE BLADE GUARD

FULLY INTEGRATED SAFETY
SYSTEM

ON/OFF AND EMERGENCY
STOP CONTROL

HIGH CLEARANCE FROM FLOOR
ALLOWING TO CLEAN UNDER WITH EASE



MACHINE IN COMPLIANCE WITH
AUSTRALIAN STANDARDS AND
REGULATIONS

SAFETY FLANGES ON STAINLESS
STEEL OR TINNED WHEELS.
*Precision Machined and Balanced
Ensuring Smooth and Safe Operation.*

950 m/min BLADE SPEED

1.5KW BRAKE MOTOR

LARGE STAINLESS STEEL
BONE DUST BIN

ADJUSTABLE FEET

“THOMPSON TOUGH”

LEADING AUSTRALIAN MANUFACTURERS OF MEAT PROCESSING MACHINERY

THOMPSON Mk3 BANDSAW

The **THOMPSON Mk3 BANDSAW** offers a **RELIABLE SMOOTH CUTTING OPERATION** delivered by a direct drive motor system. The direct drive motor system also **PROVIDES POSITIVE AND CONSTANT BLADE SPEED** and **ELIMINATES THE REQUIREMENTS OF FREQUENT ADJUSTMENTS AND REPLACEMENT.**

It is constructed from **HIGH QUALITY STAINLESS STEEL** and offers many features normally associated with more expensive machinery. This is a very popular choice of Bandsaw in butcher shops and supermarket facilities.

The Thompson MK3 Bandsaw **HAS FULLY INTEGRATED SAFETY SYSTEMS INCLUDING BRAKE MOTORS.** The Brake Motor **ALLOWS THE BLADE TO STOP WITHIN APPROXIMATELY 4 SEC** when stop button is activated. **THIS MINIMIZES THE POSSIBILITY OF ACCIDENTS** caused through blade run on.

Purpose **DESIGNED HEAVY DUTY TINNED WHEELS** with **SAFETY FLANGES PREVENT THE BLADES FROM DISLODGING** when cutting greasy wet product, **ELIMINATING POSSIBILITY OF OPERATOR INJURY.**

A **POWERFUL 1.5 kW 8 POLE MOTOR** ensures **CONTINUOUS SMOOTH CUTTING OPERATION** through products.

LIMIT SWITCHES on both top and bottom doors **ENSURE THAT THE BANDSAW CANNOT BE ACCIDENTALLY STARTED** during and after cleaning operations **ELIMINATING OPERATOR INJURY.** Limit switches are **INTERNALLY WIRED TO IMPROVE THE SAFETY, HYGIENE AND APPEARANCE.**

BOTTOM WHEELS are **FITTED WITH TAPERLOCK HOUSINGS** for **EASY REMOVAL** and it **CANNOT BECOME SEIZED ON THE SHAFT** throughout the life of the Bandsaw. **QUICK AND SIMPLE DISASSEMBLY ENSURES EASE OF CLEANING.**

HIGH QUALITY ELECTRICAL COMPONENTS used in MK3 Bandsaw are rated above standard design requirements **TO ENSURE LONGER LIFE AND RELIABILITY** in harsh environment.

STAINLESS STEEL WHEEL SCRAPERS are fitted to **REDUCE PRODUCT BUILD UP BETWEEN THE WHEELS AND BLADE.**

The **BLADE TENSION ASSEMBLY AUTOMATICALLY ADJUSTS THE BLADE** to a factory preset tension.

The **HIGH CLEARANCE** from floor **ALLOWS EASY AND THOROUGH CLEANING** providing maximum hygiene.

RECOMMENDED OPTIONS

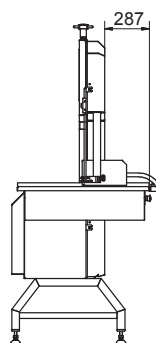
- Heavy duty emergency stop kick switch
- Stainless Steel flywheels
- Thickness guide

THOMPSON Mk3 BANDSAW SPECIFICATIONS:

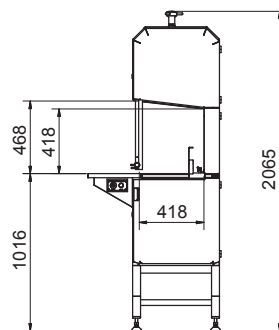
(BASED ON 415V/50Hz)

Dimension	
Overall Height	2065mm
Cutting Height	468mm
Floor Area (Door Closed)	860L x 965W (mm x mm)
Floor to Table Height	1016mm
Cutting Table Dimension	851 x 749mm
Cutting Throat Height	418mm
Cutting Throat Width	418mm
Power	
Power Supply (with Brake)	20Amp D Curve Circuit Breaker
Blade	
Blade Length	3290mm
Blade Width	16mm
Blade Speed	950m/min (3100 ft/min)
Drive	1.5 kW 8 pole 415V 50Hz
Shipping Dimension	
Shipping Weight	290kg
Shipping Size	1150L x 1150W x 2100H (mm x mm x mm)

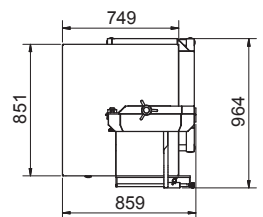
Technical data is to be used as a guide only and is subject to change without notice



Left Side View

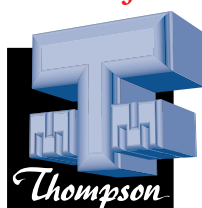


Front View



Top View

Manufactured in accordance with Australian Standards and regulations



THOMPSON MEAT MACHINERY PTY LTD

134 MAGNESIUM DRIVE, CRESTMEAD, QLD AUSTRALIA 4132

PHONE +61 7 3803 6643 – FAX +61 7 3803 6635

EMAIL sales@tmach.com.au – WEB SITE www.tmach.com.au