



THOMPSON MEAT MACHINERY

Thompson Loading Hoist

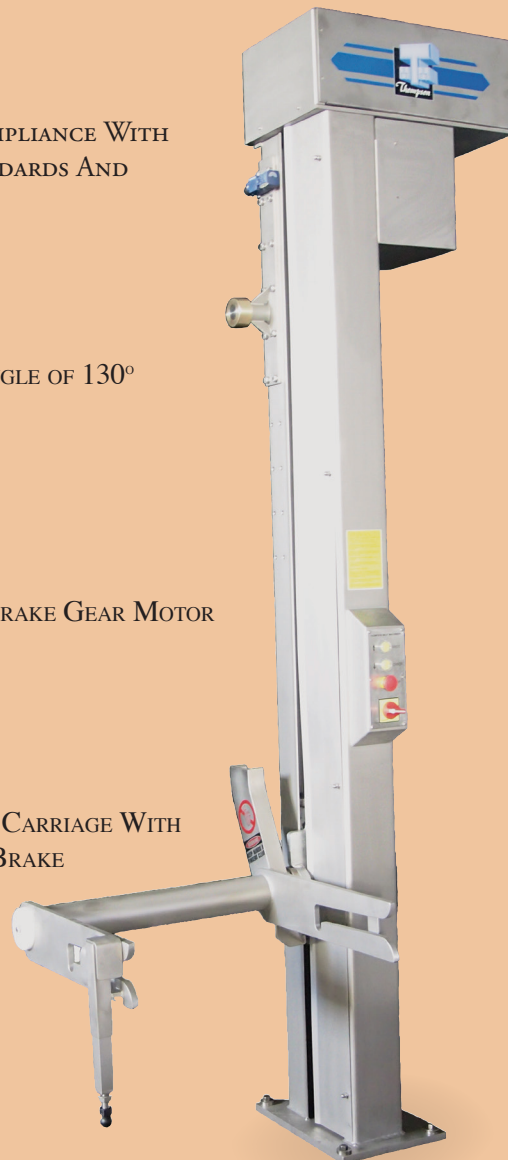
MACHINE IN COMPLIANCE WITH
AUSTRALIAN STANDARDS AND
REGULATIONS

GREAT TIPPING ANGLE OF 130°

0.75 TO 2.2KW BRAKE GEAR MOTOR

STRONG WEARING CARRIAGE WITH
BUILT IN SAFETY BRAKE

20MM STAINLESS STEEL BASE PLATE



ROBUST DESIGN

HIGH QUALITY STAINLESS STEEL

TIPPING HEIGHTS OF 1M - 3.9M

BIN LOCK IN PLACE MECHANISM
ON THE CRADLE FOR ADDED SAFETY

UP TO 1,000KG LIFTING
CAPACITY

“THOMPSON TOUGH”

LEADING AUSTRALIAN MANUFACTURERS OF MEAT PROCESSING MACHINERY

THOMPSON LOADING HOIST

The **THOMPSON LOADING HOIST** is manufactured from **HIGH QUALITY STAINLESS STEEL** to a **ROBUST DESIGN** that is **RELIABLE, STRONGLY BUILT AND LONG LASTING**. Complimented by the **QUIET AND SMOOTH ACTION** of the gearmotor drive this makes the **THOMPSON LOADING HOIST ONE OF THE BEST HOISTS** available on the market.

SAFETY FEATURES are encompassed in the whole design of the **THOMPSON LOADING HOIST**. A **20 MM STAINLESS STEEL BASE PLATE** anchors the Hoist to a concrete floor. A **STRONG WEARING CARRIAGE** with bronze bushes has a **SAFETY BRAKE** that prevents the load from falling in the unlikely event that the chain does break. A **"BIN LOCK IN PLACE"** mechanism on the cradle and the **"PRESS AND HOLD OPERATION"** add to the safety.

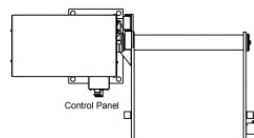
With the addition of an **INTERLOCKED SAFETY CAGE** the **THOMPSON LOADING HOIST** can be built to **"AUTO-RUN UP AND DOWN"** to within 500 mm off the floor. At which point the Hoist reverts to **"HOLD TO RUN"** as an **ADDITIONAL SAFETY FEATURE**.

HIGHLY EFFICIENT with A **0.75 kW BRAKE GEAR MOTOR** unit this Hoist encompasses the ethos of **ENERGY CONSERVATION** and **TROUBLE-FREE OPERATION**. Simple roller tipping design for **RELIABILITY** and **RUGGED OPERATION** and the **GREATER TIPPING ANGLE OF 130°** ensure **THOROUGH EMPTY OF TOTE BINS**.

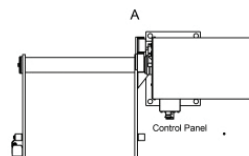
The **THOMPSON LOADING HOIST** can be utilized for a variety of tipping applications and incorporated to feed many types of equipment. With **TIPPING HEIGHTS FROM 1 METRE THROUGH TO 3.9 METRES** this series of **THOMPSON LOADING HOIST** has been used to load **MIXER MINCERS, FILLING MACHINES, TUMBLERS** or simply as **A MATERIAL HANDLING** or **TRANSFER APPLICATION**.

OPTIONS INCLUDE:

- Up to 1,000kg Lifting Capacity (2.2kW Brake Gear Motor)
- Left Hand (Option 1) or Right Hand (Option 2) Operations
- Isolator (fitted standard to CE specs)
- Pouring Spout to Cradle (liquid products)



Option 1 - (Left Hand Operation)



Option 2 - (Right Hand Operation)

THOMPSON LOADING HOIST DIMENSIONS:

Model	Hoist Height (B) (mm)	Minimum Loading Height (D) (mm)	Maximum Loading Height (C) (mm)	Ceiling Height Minimum (A) (mm)
Standard Loading Hoist	2912	1533	2013	3250
3200 Loading Hoist	3412	2020	2260	3500
3400 Loading Hoist	3682	2020	2500	3740
3700 Loading Hoist	3972	2620	2860	4100
3950 Loading Hoist	4222	2860	3100	4290

THOMPSON LOADING HOIST SPECIFICATIONS: (BASES ON 415V / 50Hz)

Model	Lifting Capacity (kg)	Motor (kW)	*Power Supply (Amps)	Full Load Current(Amps)	Ship Size (cm) L x W x H	Ship Weight (kg)
Standard Loading Hoist	200kg	0.75	10	5	330 x 100 x 100	650
3200 Loading Hoist	200kg	0.75	10	5	370 x 100 x 100	750
3400 Loading Hoist	200kg	0.75	10	5	390 x 100 x 100	800
3700 Loading Hoist	200kg	0.75	10	5	420 x 100 x 100	875
3950 Loading Hoist	200kg	0.75	10	5	445 x 100 x 100	900

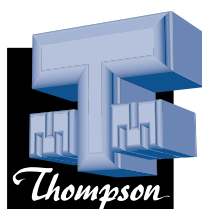
*Machine power to be fitted with a "D" curve motor start circuit breaker

It is strongly recommended that only chemically bonded threaded anchor systems be used for installation

Technical data is to be used as a guide only and is subject to change without notice.

Dimensions and weights may vary in the course of development.

Manufactured in accordance with Australian Standards and Regulations



THOMPSON MEAT MACHINERY PTY LTD

134 MAGNESIUM DRIVE, CRESTMEAD, QLD AUSTRALIA 4132

PHONE +61 7 3803 6643 – FAX +61 7 3803 6635

EMAIL sales@tmach.com.au – WEB SITE www.tmach.com.au



Custom 1,000 kg Loading Hoist



Thompson Loading Hoist pictured with Thompson 4200 Mixer Mincer and 200L tote bin